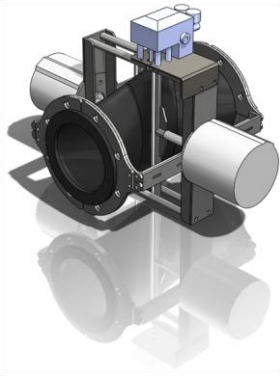




eDART Installation and Maintenance Manual - Flash Pinch Valve

Babcock Business Park · Cnr Jet Park and North Reef Roads · Jet Park · Gauteng · South Africa
Landline: +27.11.823.6620 · info@edart.co.za · sales@edart.co.za · www.edart.co.za



Document eDART Installation and Maintenance Manual
- Flash Pinch Valve

Issue Number 1.0

Date of Issue December 2010

Manufacturer eDART Slurry Valves (Pty) Ltd • Reg No: 2000/023276/07
• cnr Jet Park and North Reef Roads • Jet Park • Gauteng
• Tel. +27.11.823.6620 • www.edart.co.za •
info@edart.co.za

Contact eDART • Tel. +27.11.823.6620 • email:
maintenance@edart.co.za
• web: www.edart.co.za



WARNING

eDART Slurry Valves (PTY) LTD will in no way be liable for any loss or injury or death caused to any person or persons or property following this installation and maintenance manual.



TABLE OF CONTENTS

1. Introduction	3
2. General Overview	3
3. Installation Guidelines.....	4
4. Rigging and Lifting.....	4
5. Expected Wear Items	4
6. Replacing Of Components	5
7. eDART Safety	7
8. Problems.....	7



WARNING

eDART Slurry Valves (PTY) LTD will in no way be liable for any loss, death or injury caused to any person or persons following this installation and maintenance manual.

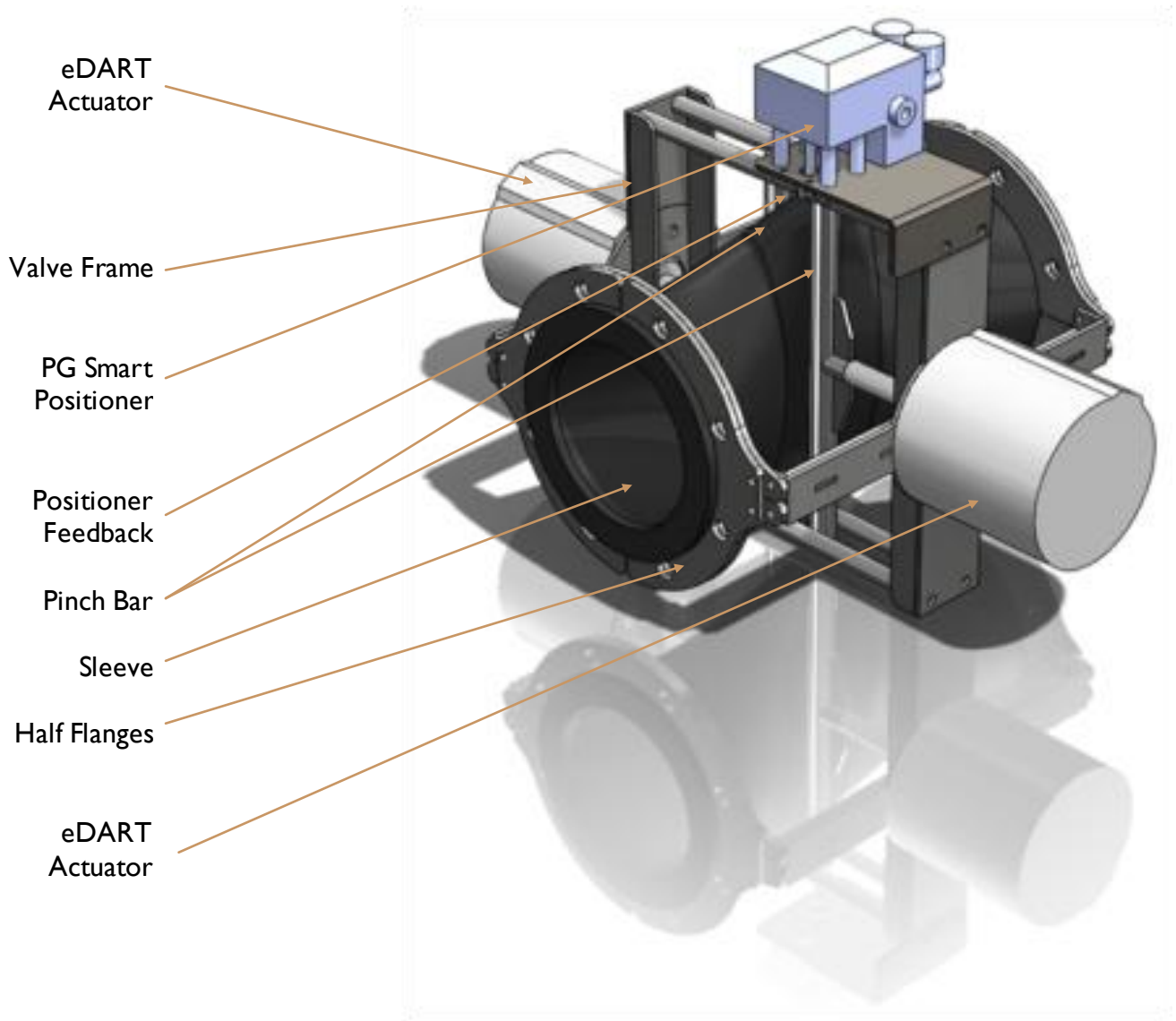
© Copyright 2010 eDART Slurry Valves (PTY) LTD
This document is subject to copyright. The content of this document may not be copied or reproduced in part or full without the prior written consent of the owner.

1. INTRODUCTION

This installation and maintenance manual covers the eDART Pinch Slurry Valve range.

2. GENERAL OVERVIEW

The eDART Pinch Valve consists of the main body frame, pinch sleeve, actuators and positioner. The sleeve is held in place by the frame, the sleeve is pinched by two stainless steel pinch bars operated by the actuators.



3. INSTALLATION GUIDELINES

1. The eDART Pinch Valve is to be bolted into the line with the positioner on the top. The pinch bars should lie in the vertical plane.
2. Connect the air and signal to the positioner.
3. Sufficient clearance above and below the valve is to be left clear for stripping, maintenance and removal.

4. RIGGING AND LIFTING

1. The eDART Flash Pinch Valve is to be lifted using a soft sling through the top of the frame, care must be taken so to avoid damage to the actuator, positioner and especially the positioner feedback mechanism.

5. EXPECTED WEAR ITEMS

1. *Sleeve* – The sleeve must be checked for wear, this is done by visually checking for any cracks or deformations in the sleeve. If any major wear is noticed the sleeve must be replaced.
2. *Pinch Bar Guides* – The pinch bar guides must be checked for wear.
3. *General* – The valve should be inspected at least once a month, if any wear or damage is noticed the manufacture should be contacted immediately.



WARNING

If any other components appear to be damaged or worn please contact eDART immediately.

6. REPLACING OF COMPONENTS

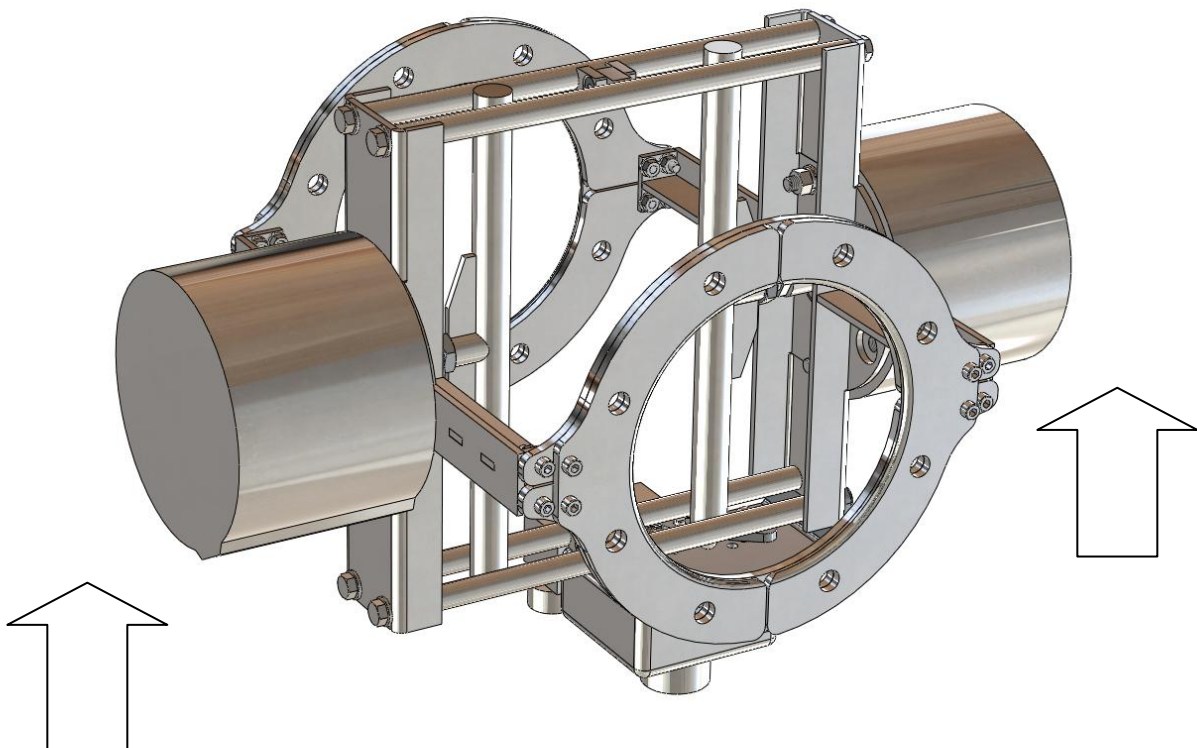


WARNING

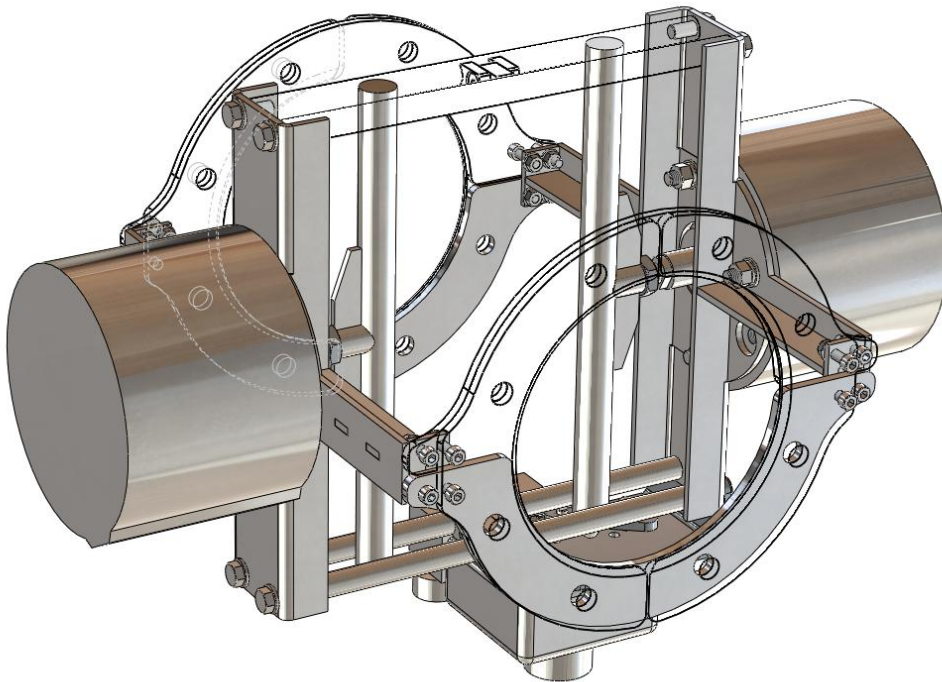
Only suitably trained personnel are to work on the eDART Valve. Before any maintenance is done the valve must be safely isolated from the line

6.1. Replacing the Sleeve

1. Isolate the eDART Flash Pinch Valve from the process and flush out the valve.
2. Pressurize the actuators with instrument air in order to open the valve; this will take the pressure off the sleeve (This can be done with the controller in manual and setting the output to 100% open) once open disconnect the air and signal.
3. Sling the valve following the rigging instruction and remove the bolts from the flanges. Lower the valve and place in a suitable area to continue with maintenance.
4. Invert the Flash Pinch Valve, making sure the weight is not taken on the positioner. Support the Actuators properly.



5. Remove three half flanges on both sides - leave the "top" half flange to hold the frame together. Remove one set of guide bars. The sleeve can now be extracted from the pinch bars.



6. Remove the old sleeve and replace with new one.
7. Place the sleeve between the pinch bars. Ensure the bars are located on the flat portion of the sleeve
8. Replace the Guide bars with the limit stop between them. Replace the six half flanges ensuring that the bolt holes line up
9. Sling and hoist valve into place bolt into line and reconnect air and signal.



NOTE

No re-stroking or calibration should be required. If for some reason the pinch bars or feedback arm were removed then the valve will need to be re-stroked and calibrated, see actuator and positioner manual for further instructions.



7. eDART SAFETY

1. The eDART Flash Pinch Valve is to be lifted using a soft sling under the body, taking care to support the actuator so as not to damage the actuator or positioner.
2. Due consideration is to be given to the weight of the components before dismantling.
3. Rigging equipment and procedures are to be followed to service the eDART.
4. Safety procedures for the use of compressed air are to be followed.
5. Only suitably qualified persons to work on or maintain eDART valves.
6. All local safety rules and regulations with respect to safety clothes applicable, tools and equipment used and methods of operation are to be adhered to.

8. PROBLEMS

For any problems please contact eDART Slurry Valves directly on –

**Tel. +27 . (0) 11 . 823 . 6620 , or
email: maintenance@edart.co.za**

Document	eDART Installation and Maintenance Manual - Flash Pinch Valve
Manufacturer	eDART Slurry Valves (Pty) Ltd • Reg No: 2000/023276/07 • cnr Jet Park and North Reef Roads • Jet Park • Gauteng • Tel. +27.11.823.6620 • www.edart.co.za • info@edart.co.za
Contact	eDART • Tel. +27.11.823.6620 • email: maintenance@edart.co.za • web: www.edart.co.za



WARNING

eDART Slurry Valves (PTY) LTD will in no way be liable for any loss or injury or death caused to any person or persons or property following this installation and maintenance manual.